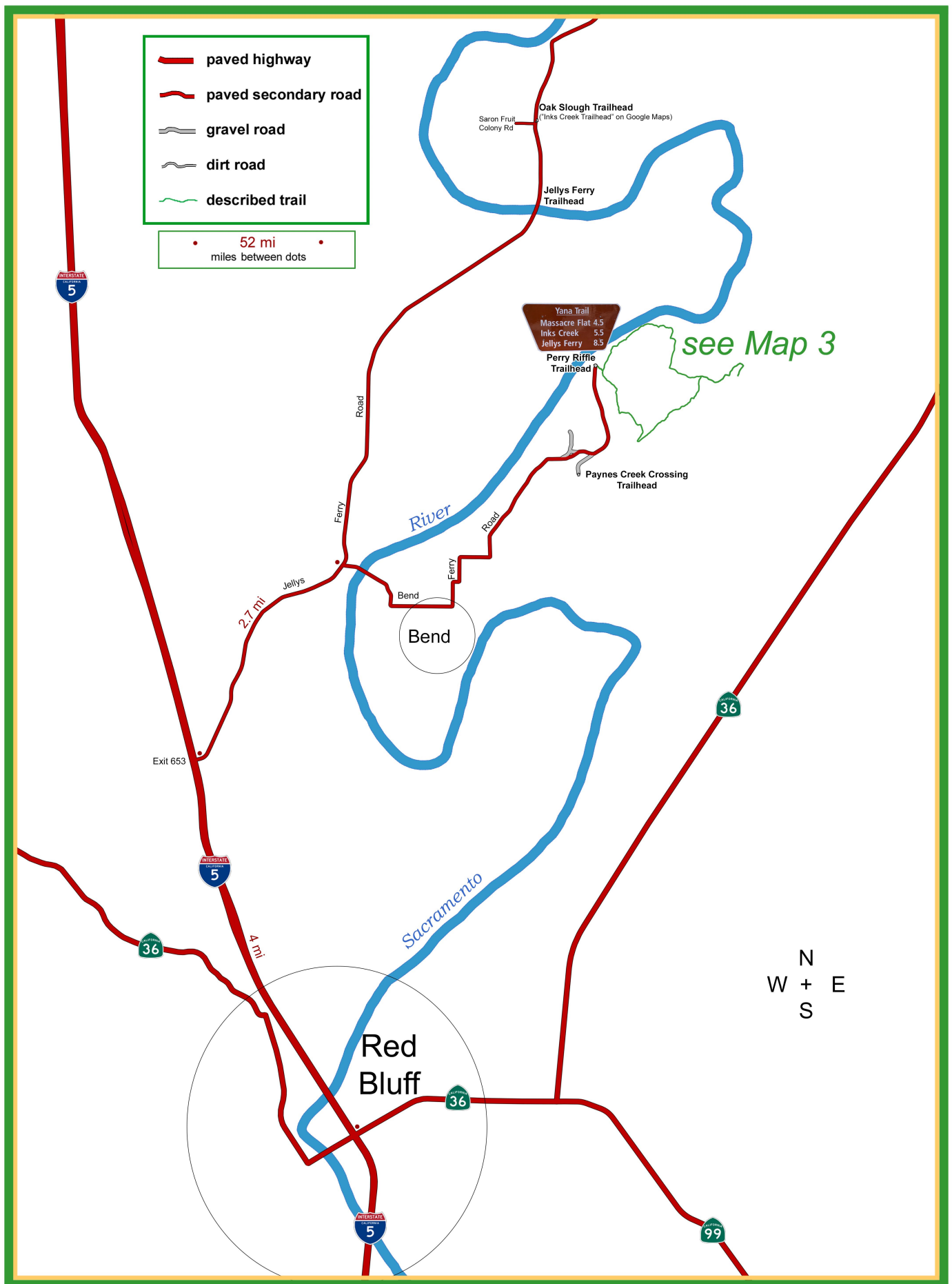


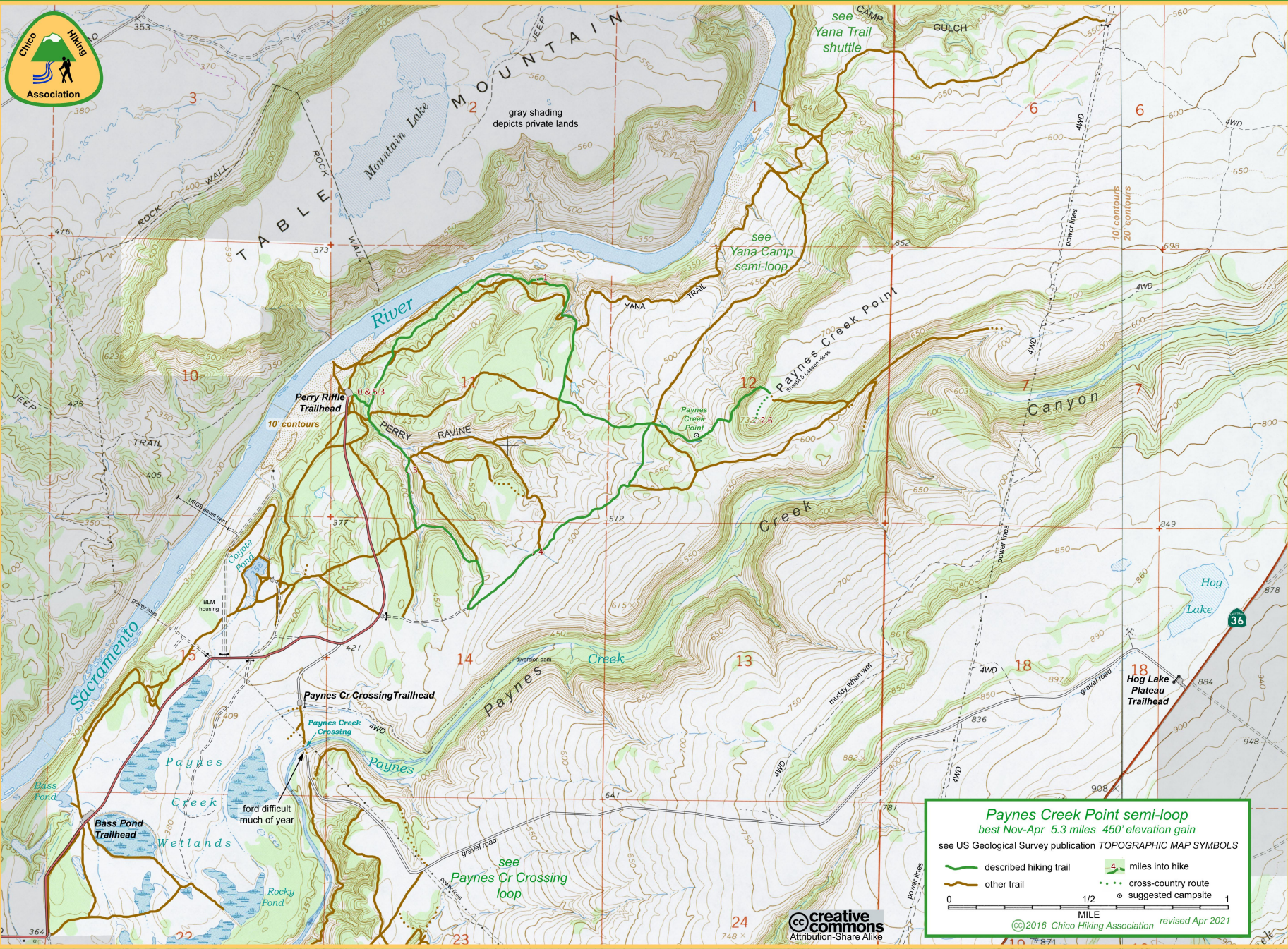
Drive: 1:00 Hike: EASY Season: Nov-Apr (hot May-Oct)



Paynes Creek Point semi-loop ▪ Map 1 of 3



Paynes Creek Point semi-loop ▪ Map 2 of 3



Paynes Creek Point semi-loop
best Nov-Apr 5.3 miles 450' elevation gain
see US Geological Survey publication TOPOGRAPHIC MAP SYMBOLS

described hiking trail 4 miles into hike
other trail cross-country route
suggested campsite

0 1/2 1 MILE
©2016 Chico Hiking Association revised Apr 2021

