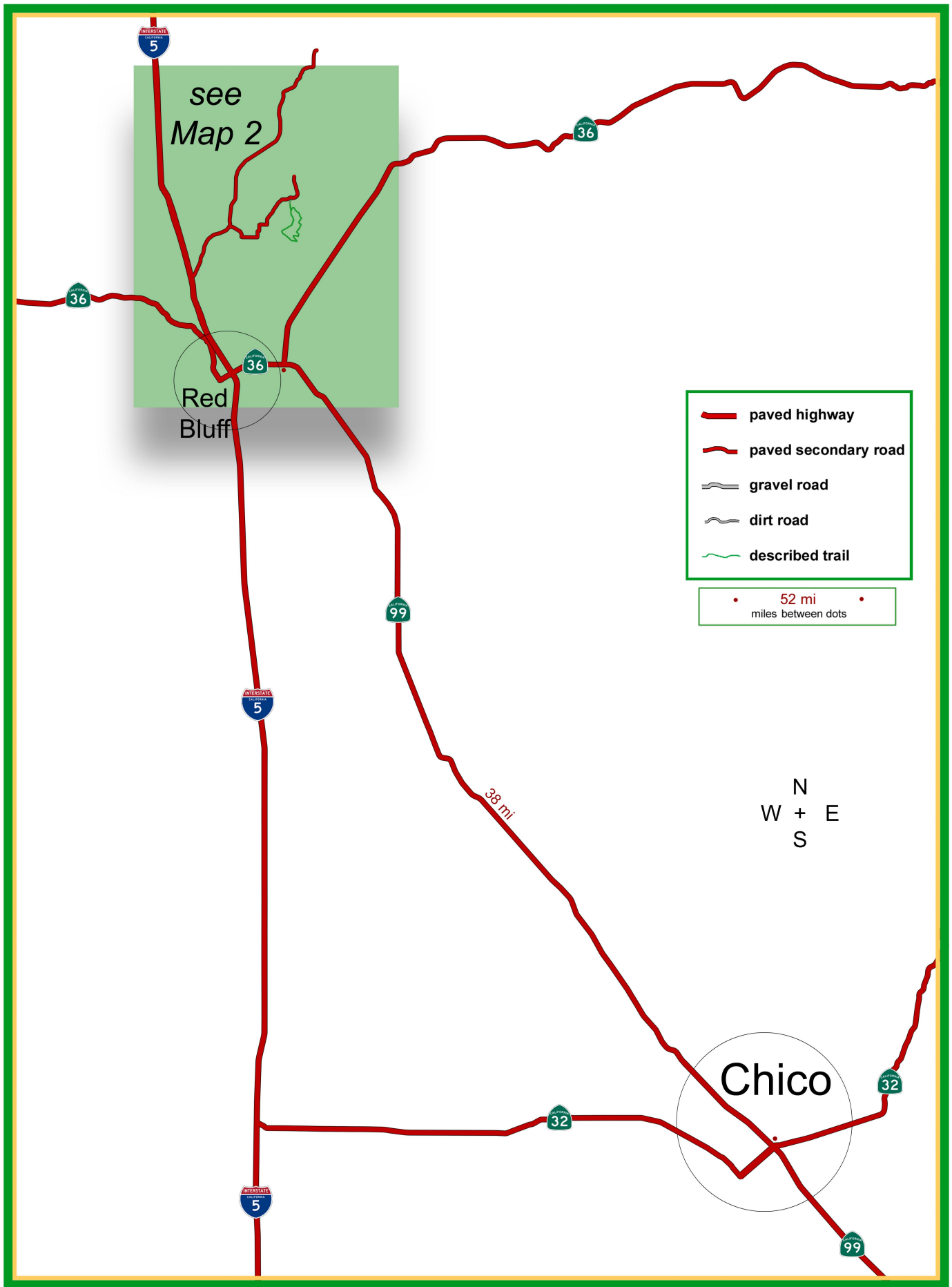
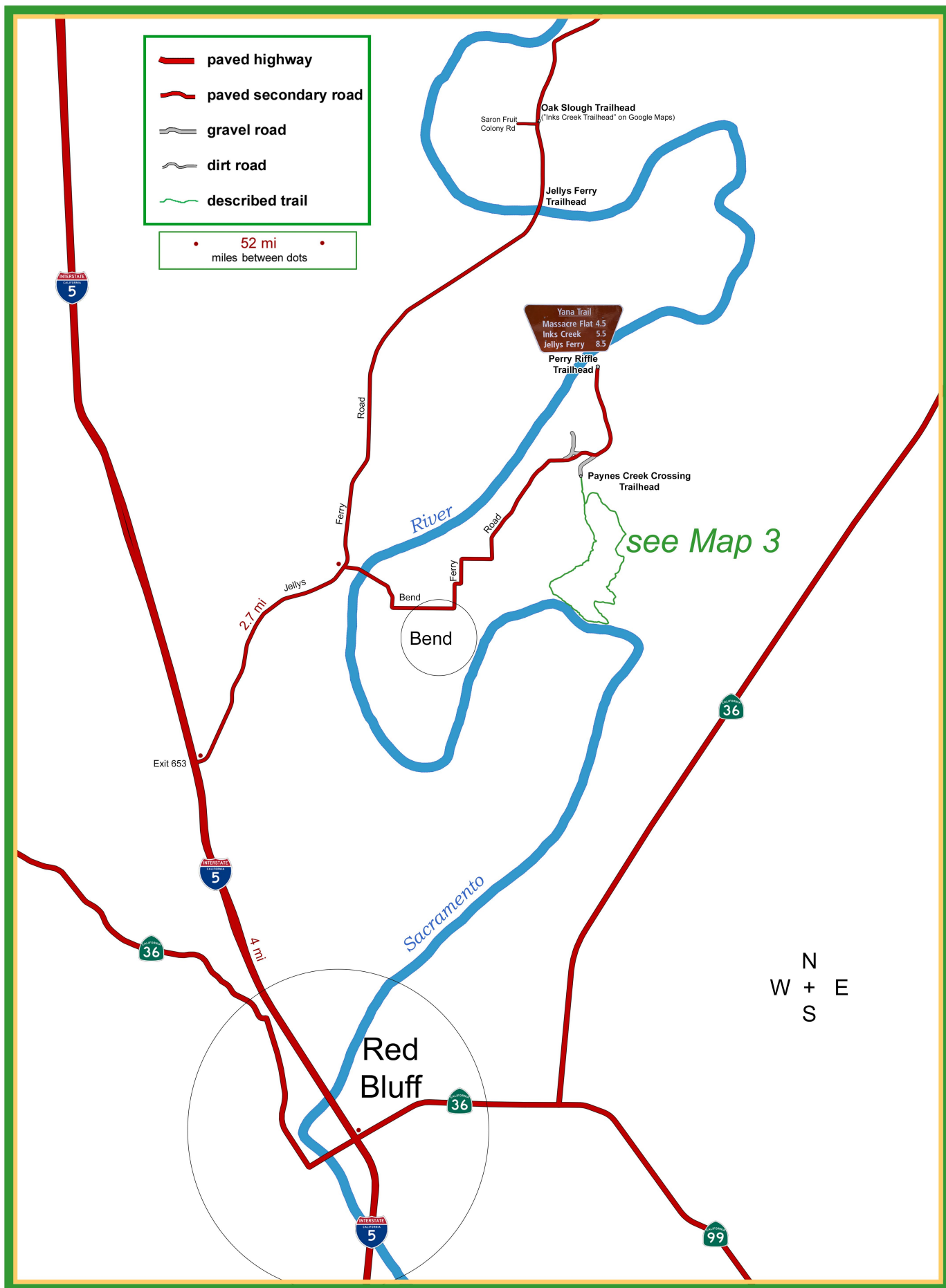


Drive: 1:00    Hike: EASY    Season: Nov-Apr (NOT if water is high) (hot May-Oct)

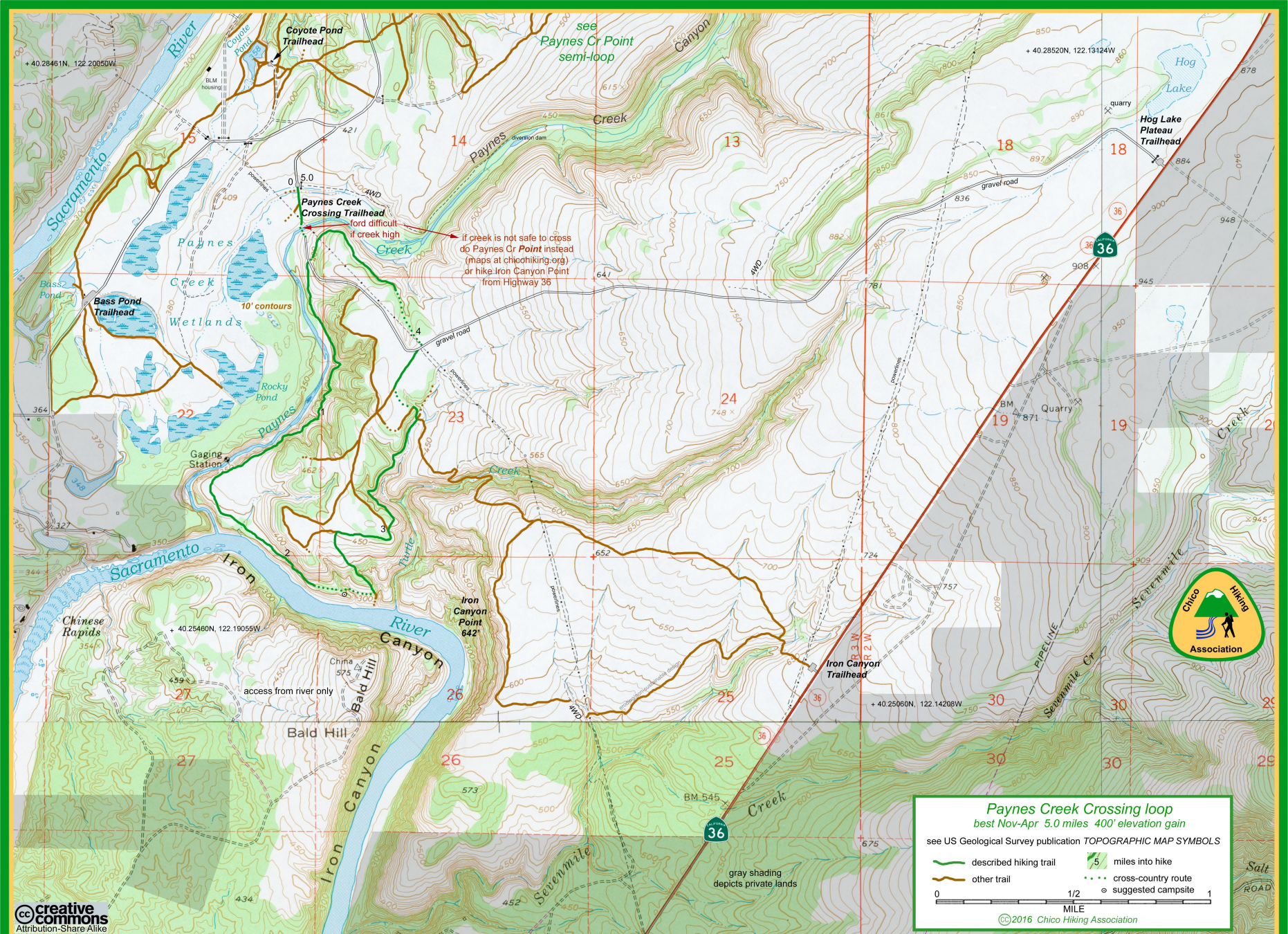


Paynes Creek Crossing loop ▪ Map 1 of 3



Paynes Creek Crossing loop ▪ Map 2 of 3





**Paynes Creek Crossing loop**  
best Nov-Apr 5.0 miles 400' elevation gain  
see US Geological Survey publication TOPOGRAPHIC MAP SYMBOLS

described hiking trail 5 miles into hike  
other trail cross-country route suggested campsite

0 1/2 1 MILE

©2016 Chico Hiking Association