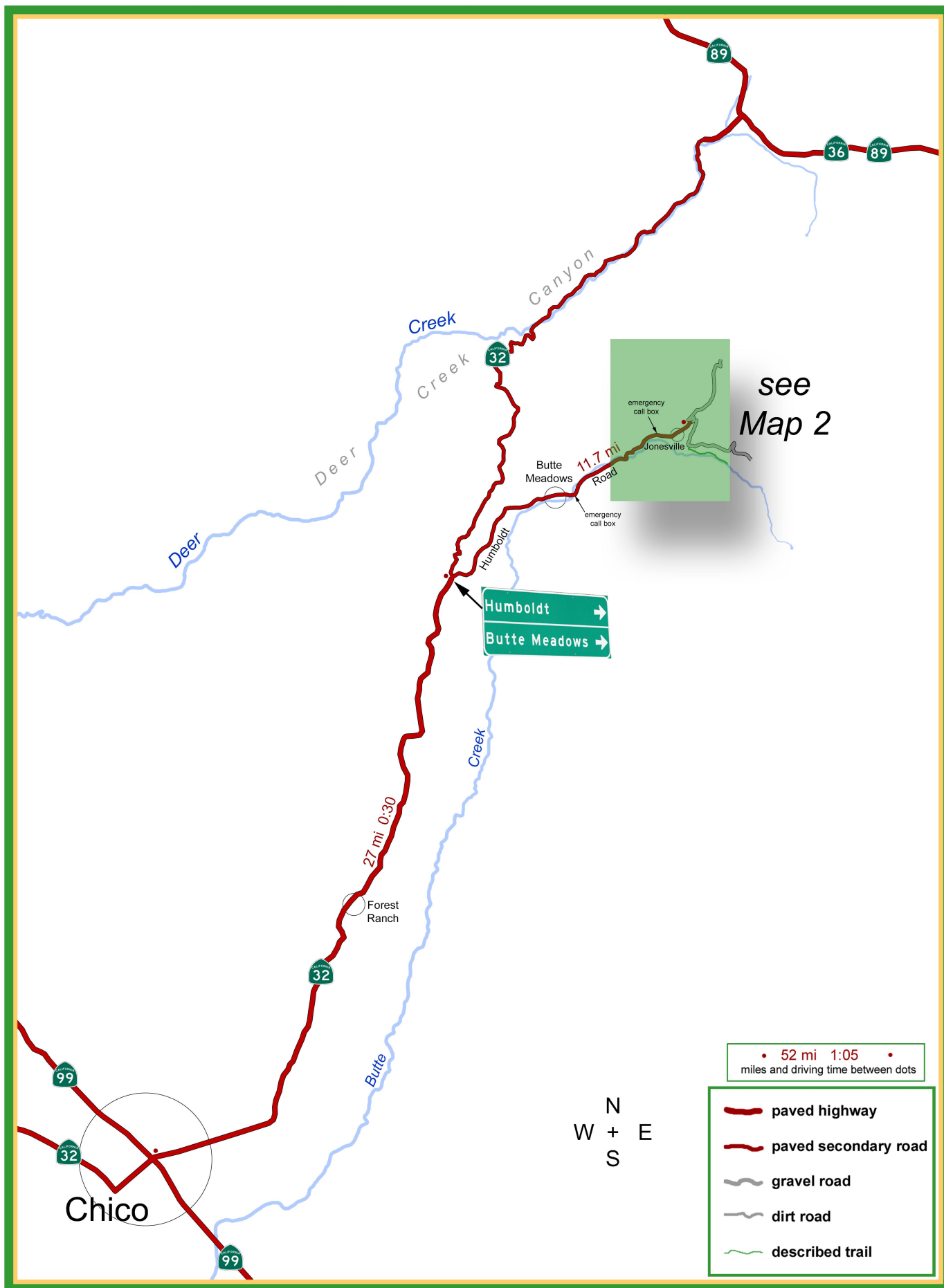


Drive: 0:55 Hike: SHORT Season: mid May-Oct (snow Nov-mid May)

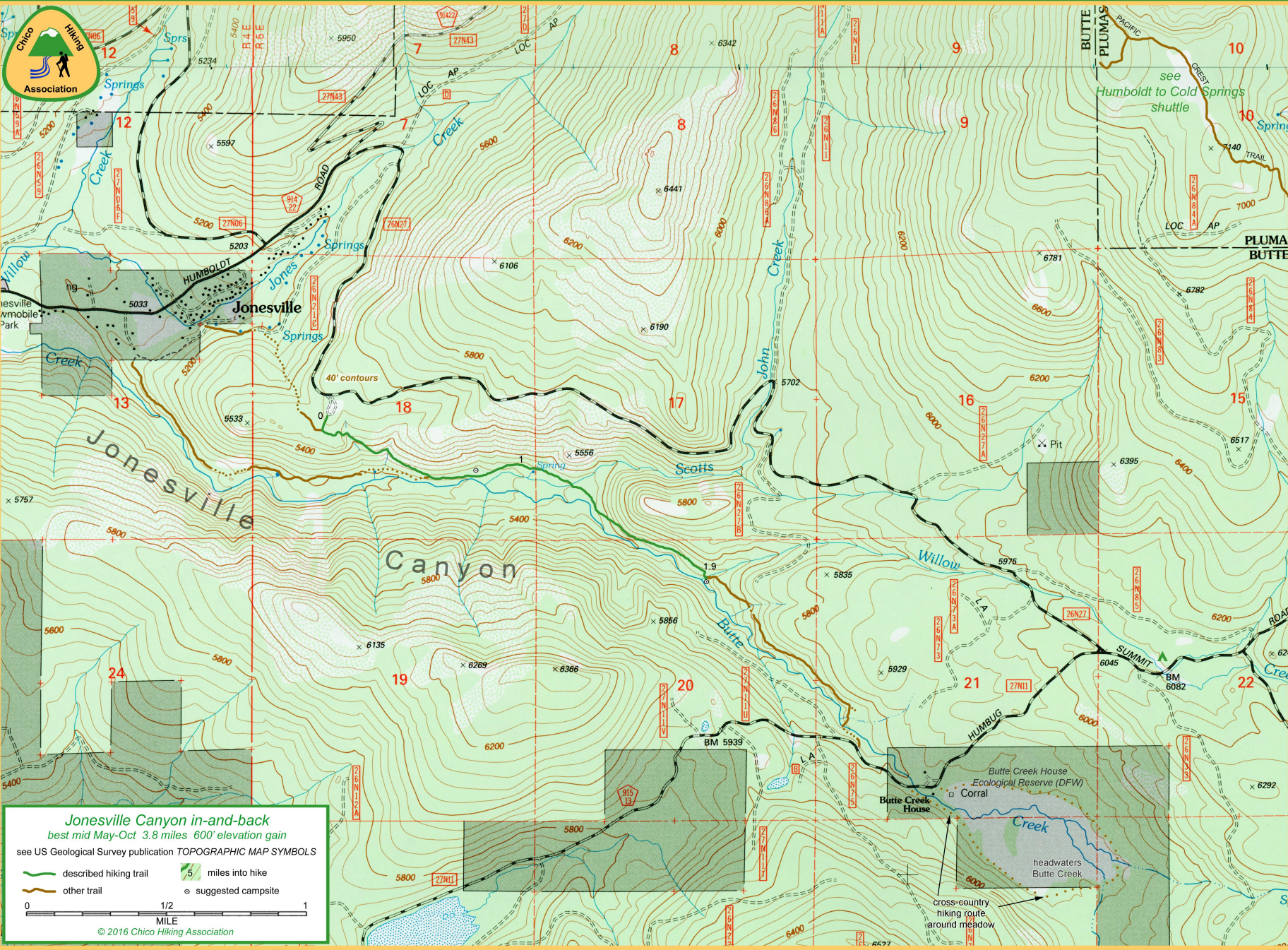


Jonesville Canyon in-and-back ▪ Map 1 of 3



*Jonesville Canyon in-and-back ■ Map 2 of 3*



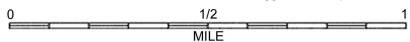


### Jonesville Canyon in-and-back

best mid May-Oct 3.8 miles 600' elevation gain

see US Geological Survey publication TOPOGRAPHIC MAP SYMBOLS

- described hiking trail
- other trail
- suggested campsite



© 2016 Chico Hiking Association