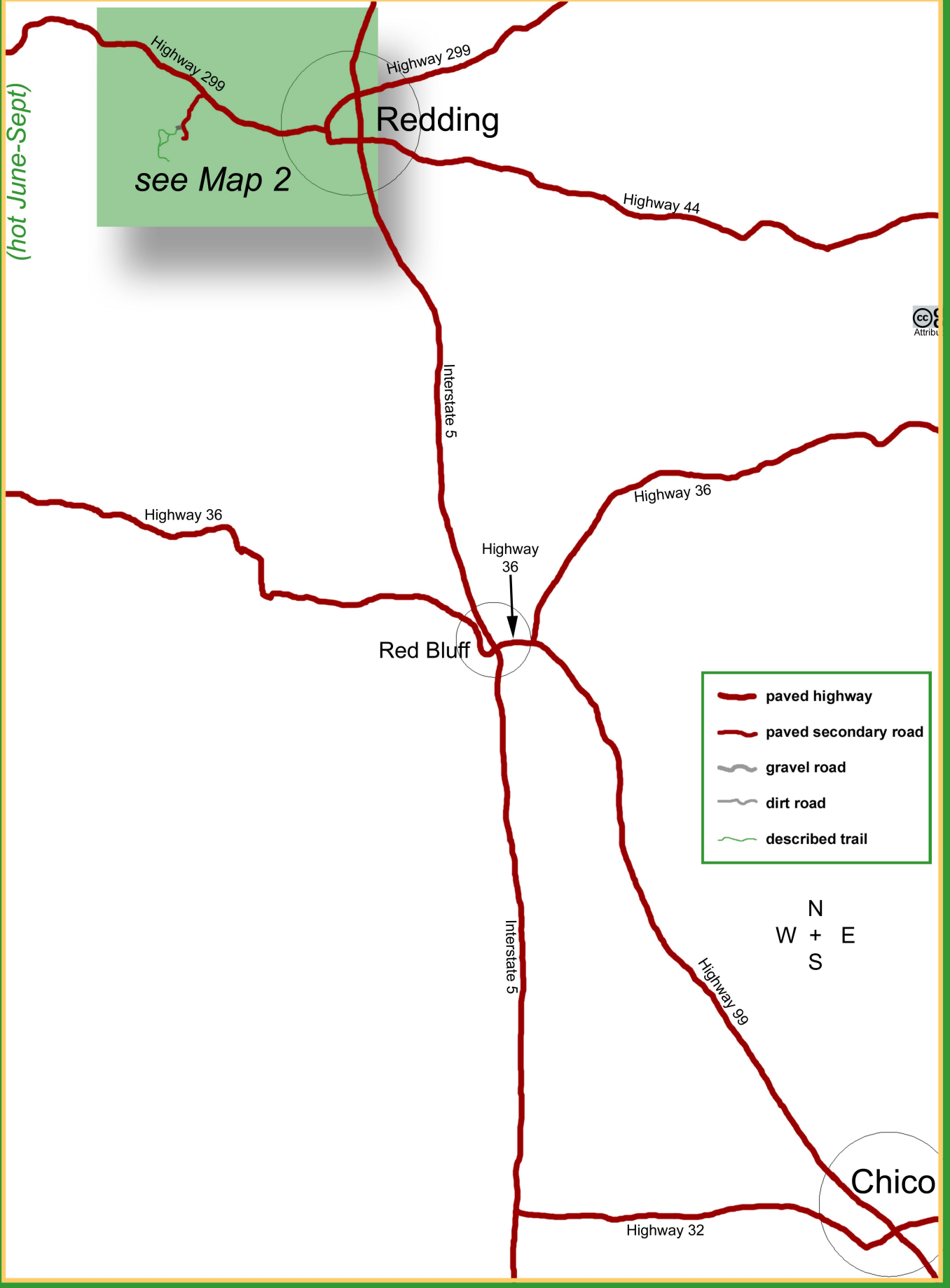


Drive: 1:35 Hike: MODERATE Season: Oct-May except when creek high from rains OR snow below 3,000'

(hot June-Sept)



see Map 2

Redding

Red Bluff

Chico

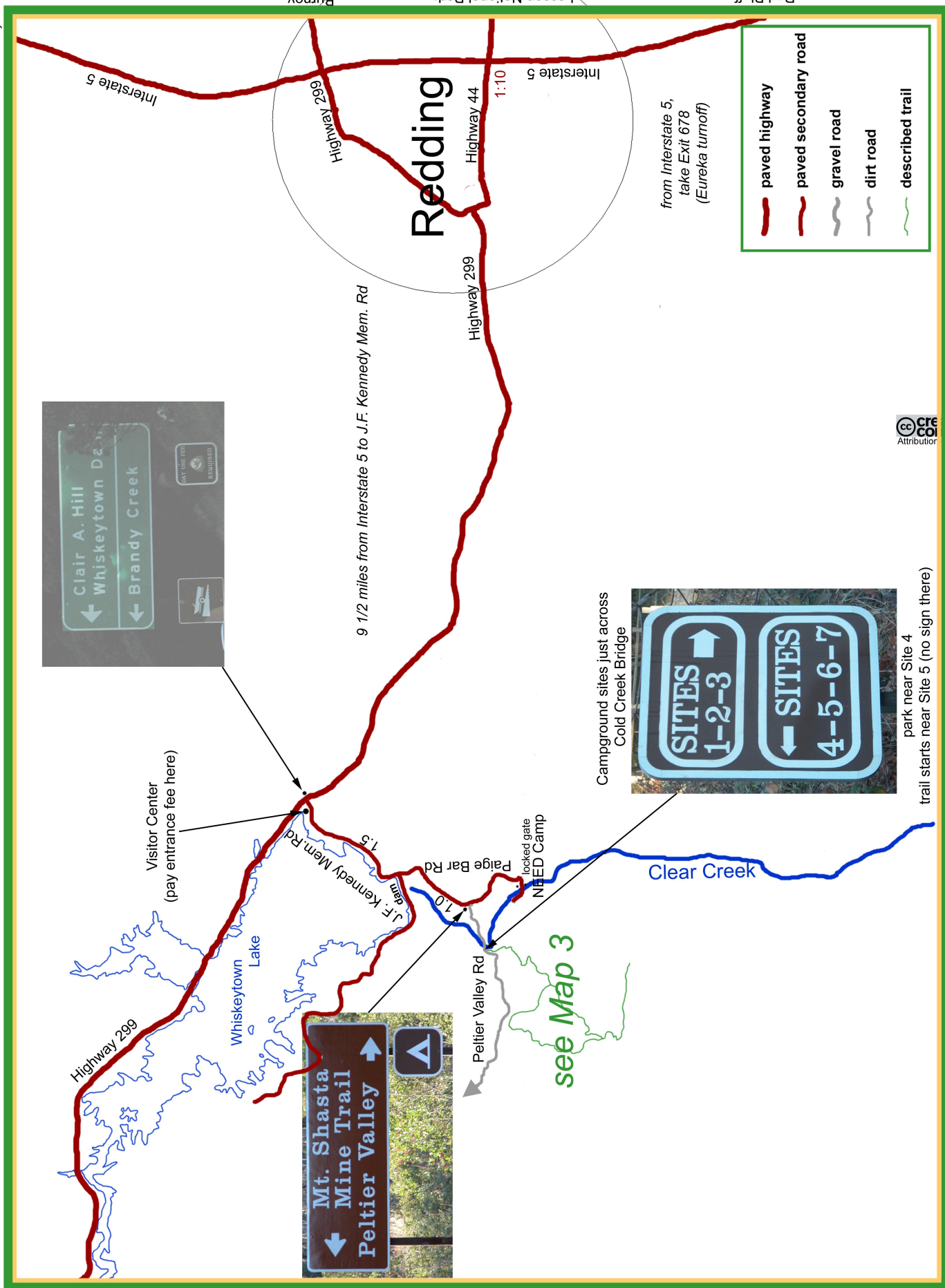


Susanville

© 2004 Chico Hiking Association

Kanaka Peak semi-loop ▪ Map 1 of 3

Kanaka Peak semi-loop - Map 2 of 3

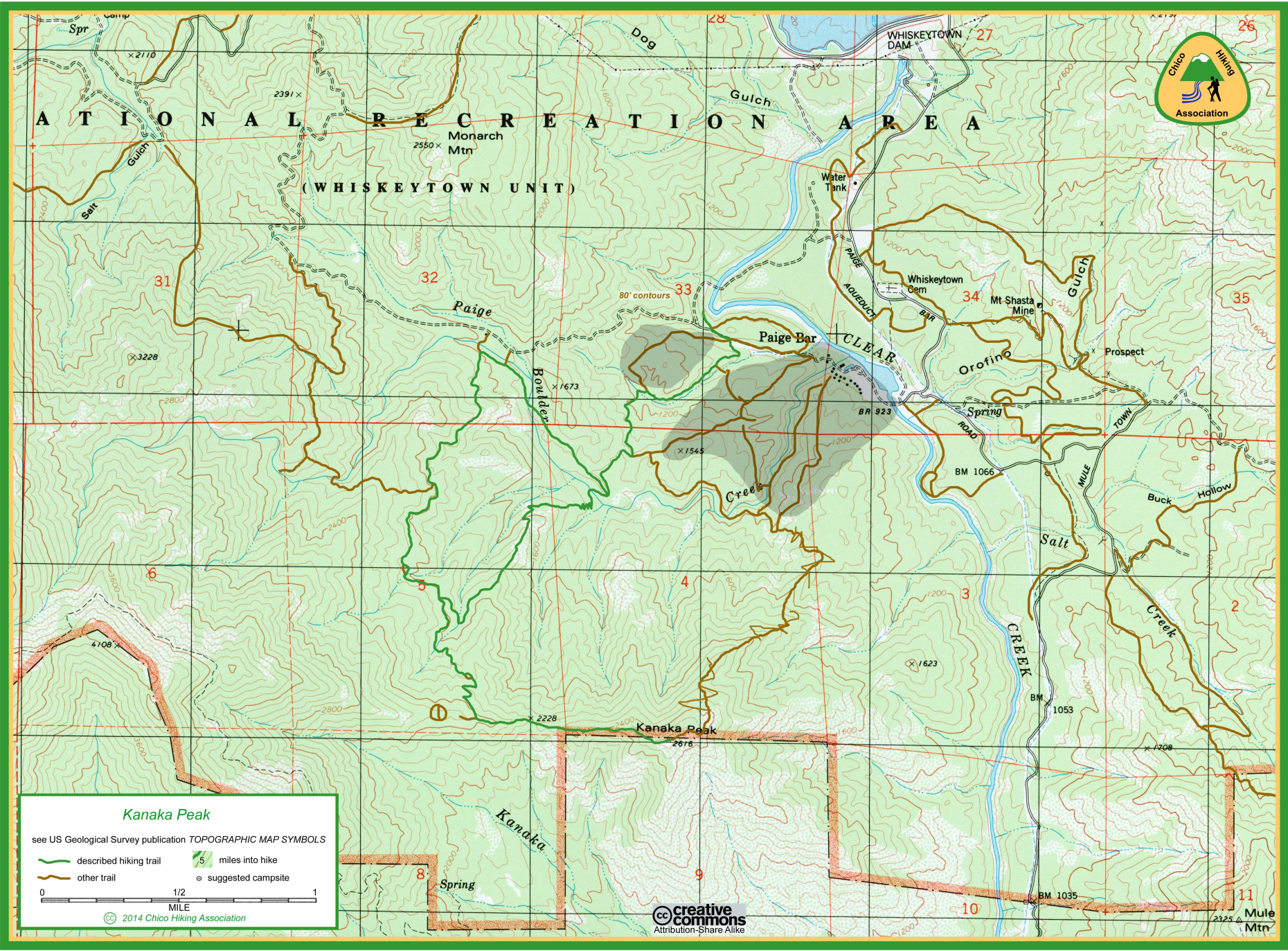


see Map 3

from Interstate 5, take Exit 678 (Eureka turnoff)

- paved highway
- paved secondary road
- gravel road
- dirt road
- described trail





Kanaka Peak

see US Geological Survey publication **TOPOGRAPHIC MAP SYMBOLS**

- described hiking trail
- other trail
- 5 miles into hike
- suggested campsite

0 1/2 1 MILE

© 2014 Chico Hiking Association



Mule Mtn 2325